

THREADED ROD THROUGH BOTH CHEEKS AND BRACKETS - 1/4"X5 3/8"LG C/W 4 NUTS

- THE DIMENSIONS ON THESE PLANS WERE TAKEN DIRECTLY FROM A VISE THAT WAS BUILT AT THE "FORGE ROYALE DE PARIS" DATING BACK TO THE LATE 1800'S TO EARLY 1900'S.
- THE SCREW HARDWARE WAS DIMENSIONED FOR REFERENCE PURPOSES ONLY. THESE ARE TO BE MODIFIED TO SUIT AVAILABLE HARDWARE.
- THE SCREW IS A "THIN" 7/8" DIA. AND HAS A THREAD COUNT JUST SHY OF 5TPI (ADDITIONAL INFO AVAILABLE UPON REQUEST)
- ALL MATERIAL IS WOOD (EUROPEAN BEECH AS A BEST GUESS) U.N.O.

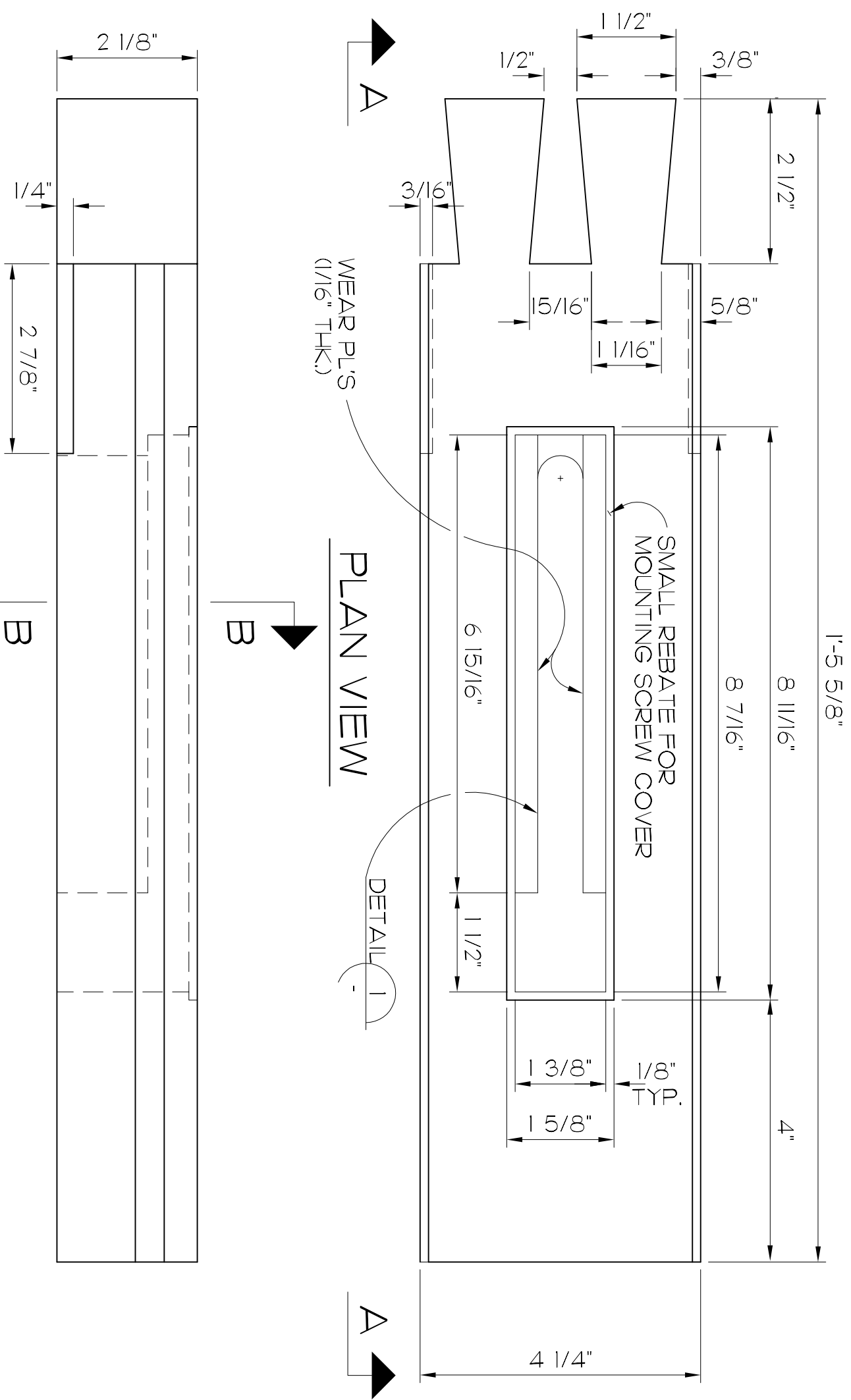
REV.		DATE		REVISION		BY		APP		CLIENT	
										WOODWORKERS AT LARGE	
										CARVER'S CHOPS PLANS	
										FROM "FORGE ROYALE" MODEL	
										PROJECT NUMBER	
										DRAWING NUMBER	
										2006-100 SHT. 1/7	
										REV.	
										B	



PUNCHINELLO ENTERPRISES

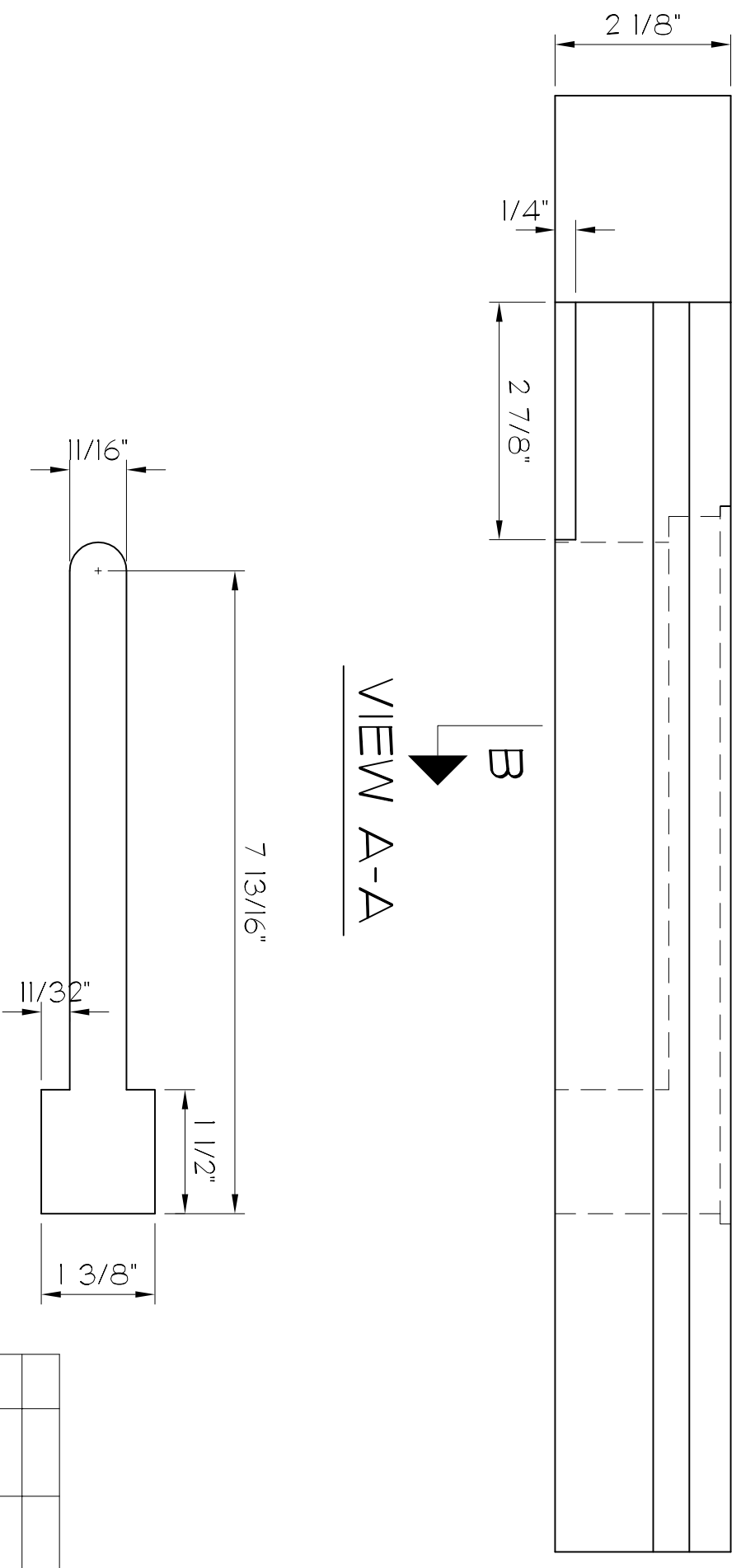
NOTE: THESE PLANS ARE PROVIDED FOR PERSONAL USE ONLY AND MAY NOT BE SOLD FOR PROFIT OR REDISTRIBUTED WITHOUT WRITTEN PERMISSION BY THE AUTHOR, LOUIS BOS

SCALE: 1/2" = 1"



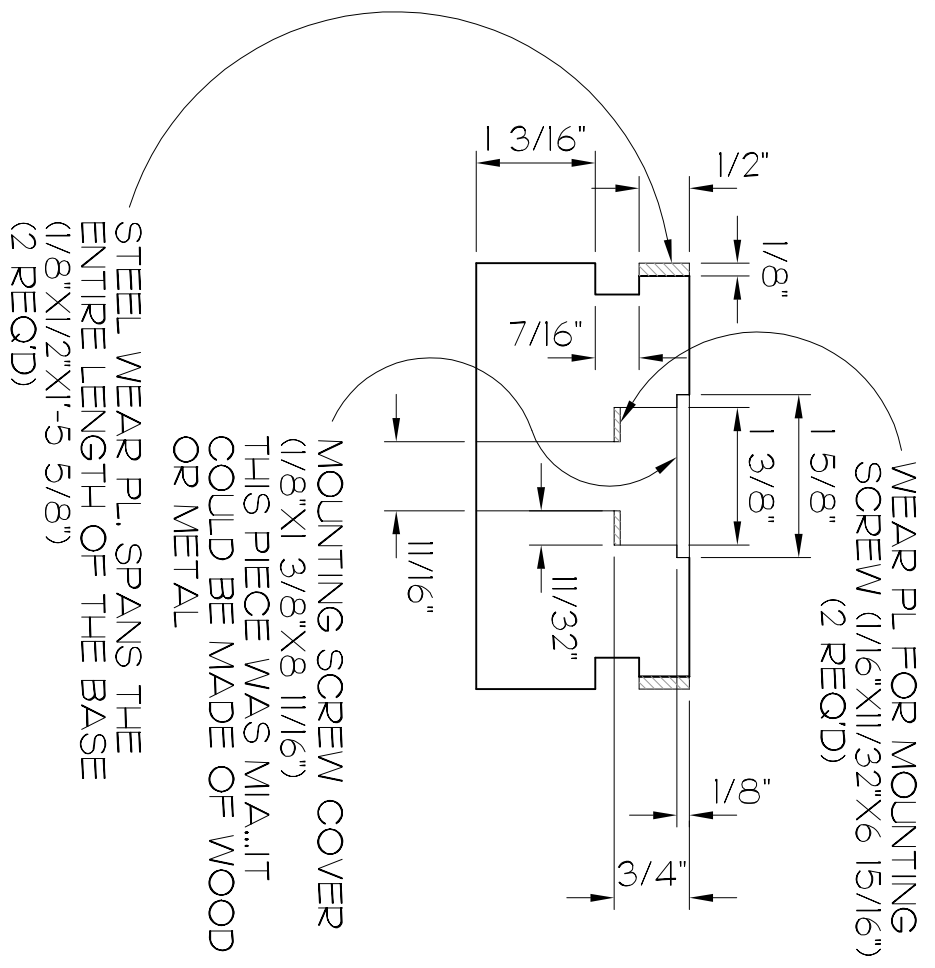
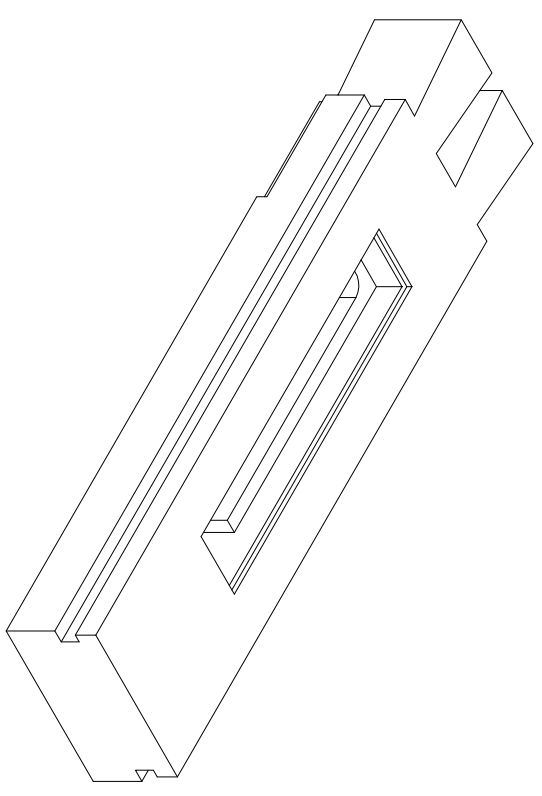
PLAN VIEW

VIEW A-A



DETAIL 1

SLOT FOR MOUNTING SCREW



VIEW B-B

WEAR PL. FOR MOUNTING SCREW (1/16"X11/32"X6 15/16") (2 REQ'D)

MOUNTING SCREW COVER (1/8"X1 3/8"X8 11/16") THIS PIECE WAS MIA...IT COULD BE MADE OF WOOD OR METAL

STEEL WEAR PL. SPANS THE ENTIRE LENGTH OF THE BASE (1/8"X1/2"X1'-5 5/8") (2 REQ'D)

REV.	DATE	REVISION	BY	APP.	CLIENT
					WOODWORKERS AT LARGE
					TITLE
					CARVER'S CHOPS PLANS
					FROM "FORGE ROYALE" MODEL
					PROJECT NUMBER
					DRAWING NUMBER
					2006-100 SH.T. 2/7
					REV.
					B

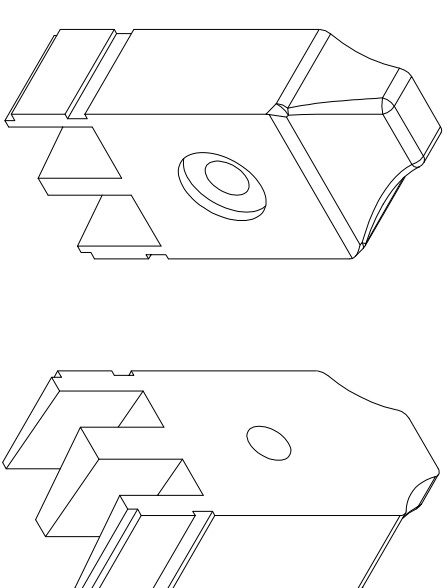
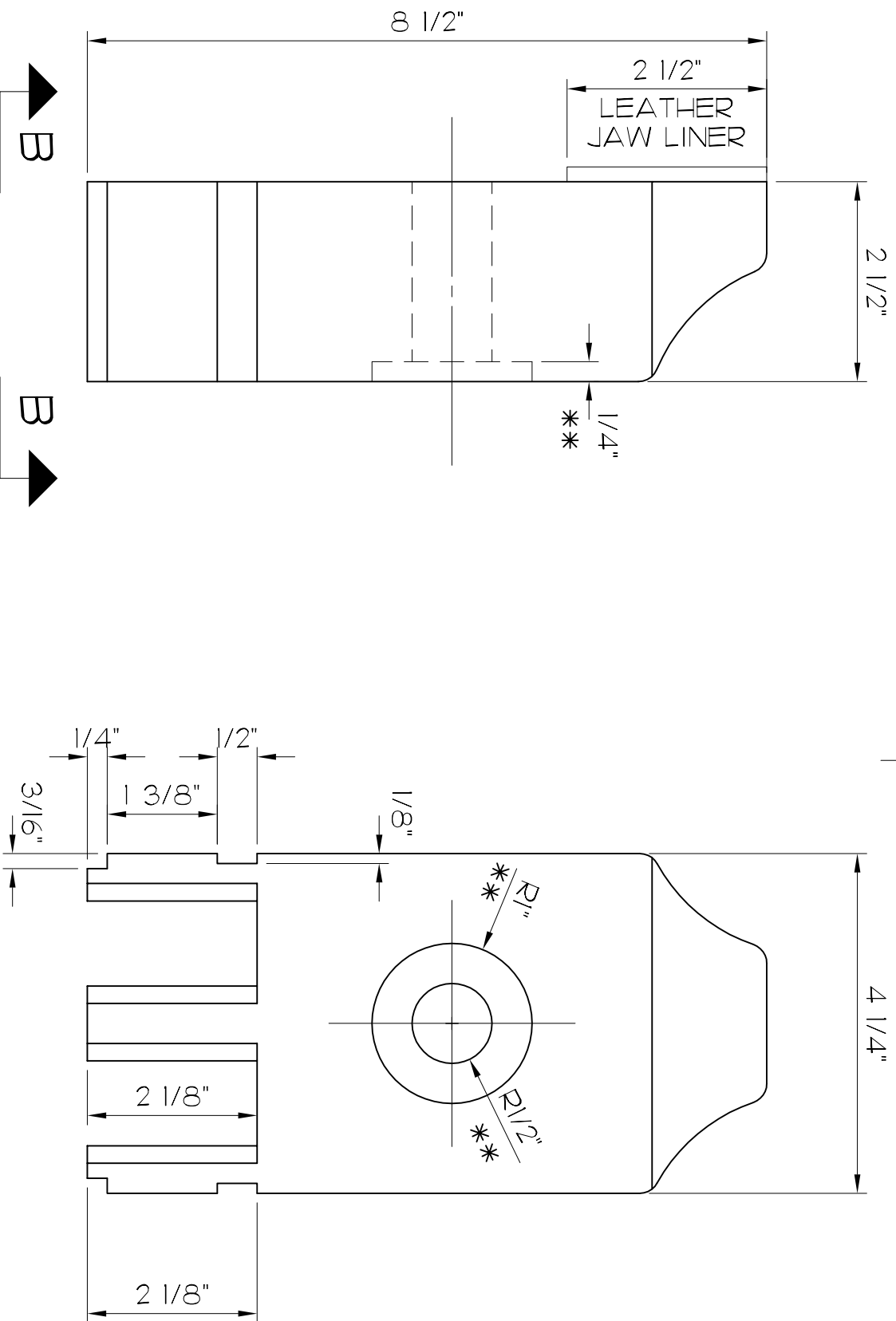


PUNCHINELLO ENTERPRISES

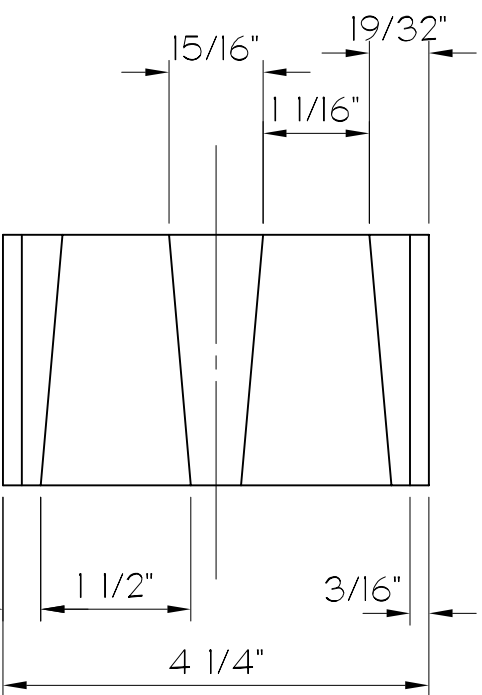
NOTE: THESE PLANS ARE PROVIDED FOR PERSONAL USE ONLY AND MAY NOT BE SOLD FOR PROFIT OR REDISTRIBUTED WITHOUT WRITTEN PERMISSION BY THE AUTHOR, LOUIS BOS

SCALE: 1/2" = 1'

** SEE NOTE 1



VIEW A-A



VIEW B-B

- NOTES:
1. THESE DIMENSIONS ARE FOR THE ORIGINAL VISE HARDWARE. THEY WILL VARY WIDELY AND SHOULD BE MODIFIED TO SUIT AVAILABLE HARDWARE.
 2. THE BASIC ROUNDOVER AT THE TOP OF THE JAW IS APPROX. 1/4" ON THE ORIGINAL MODEL. THIS CAN BE TAILORED TO SUIT INDIVIDUAL TASTE.

REV.	DATE	REVISION	BY	APP	CLIENT
					WOODWORKERS AT LARGE
					TITLE
					CARVER'S CHOPS PLANS
					FROM "FORGE ROYALE" MODEL
					PROJECT NUMBER
					DRAWING NUMBER
					2006-100 SH1, 3/7
					REV.
					B

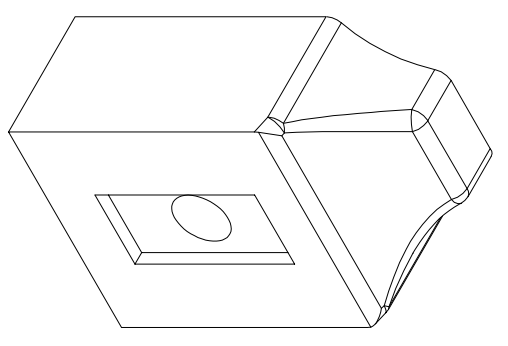
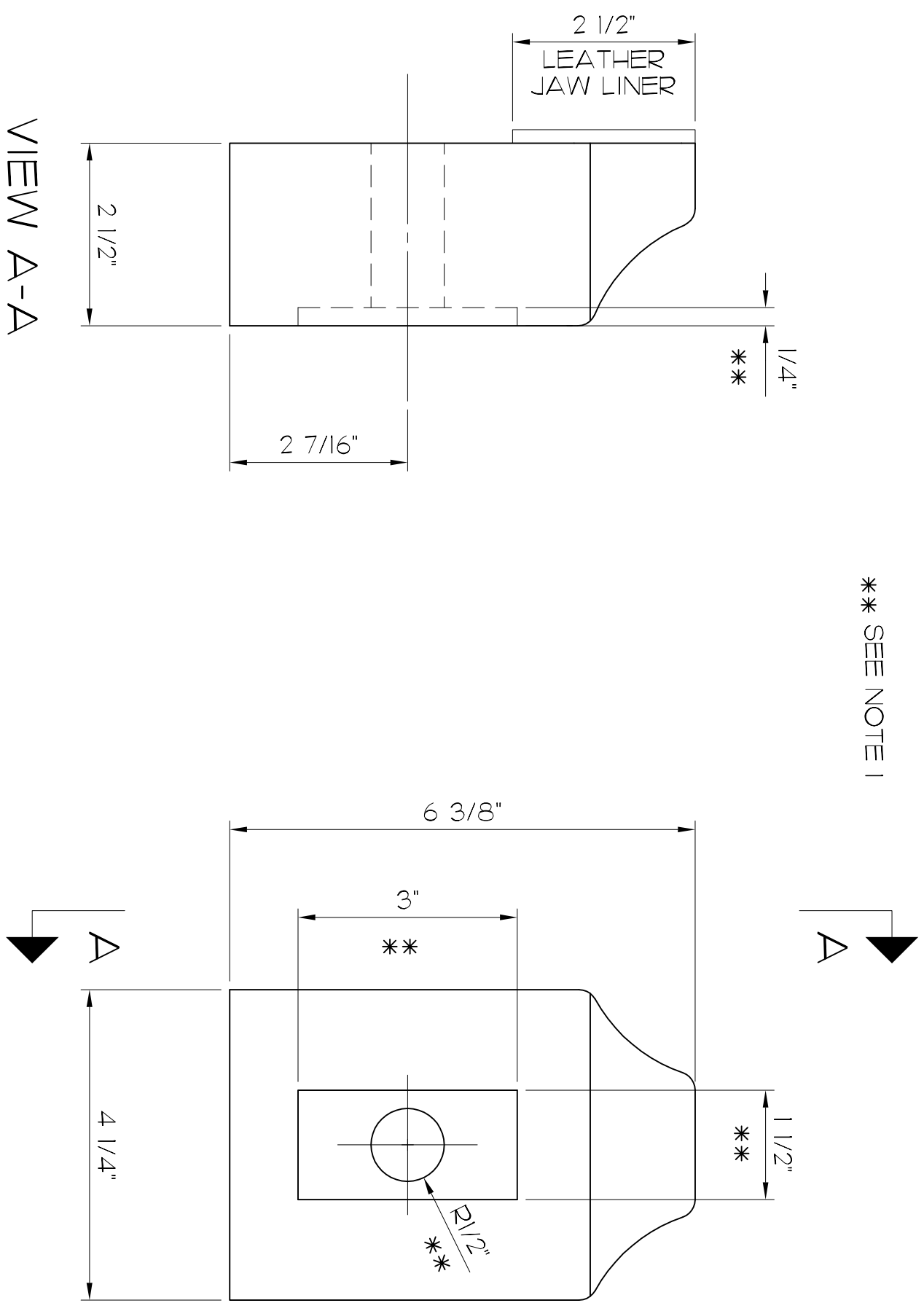


PUNCHINELLO ENTERPRISES

NOTE: THESE PLANS ARE PROVIDED FOR PERSONAL USE ONLY AND MAY NOT BE SOLD FOR PROFIT OR REDISTRIBUTED WITHOUT WRITTEN PERMISSION BY THE AUTHOR, LOUIS BOS

SCALE: 1/2" = 1"

** SEE NOTE 1

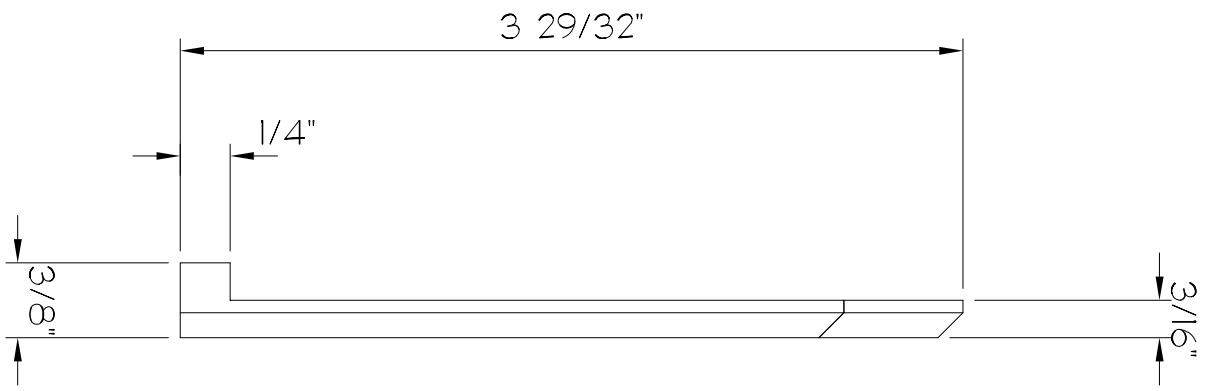


- NOTES:
1. THESE DIMENSIONS ARE FOR THE ORIGINAL VISE HARDWARE. THEY WILL VARY WIDELY AND SHOULD BE MODIFIED TO SUIT AVAILABLE HARDWARE.
 2. THE BASIC ROUNDOVER AT THE TOP OF THE JAW IS APPROX. 1/4" ON THE ORIGINAL MODEL. THIS CAN BE TAILORED TO SUIT INDIVIDUAL TASTE.

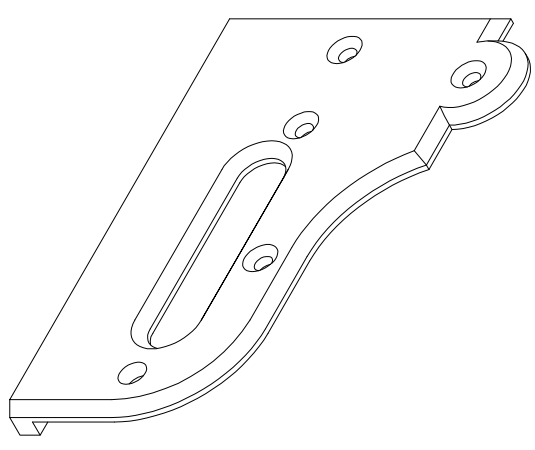
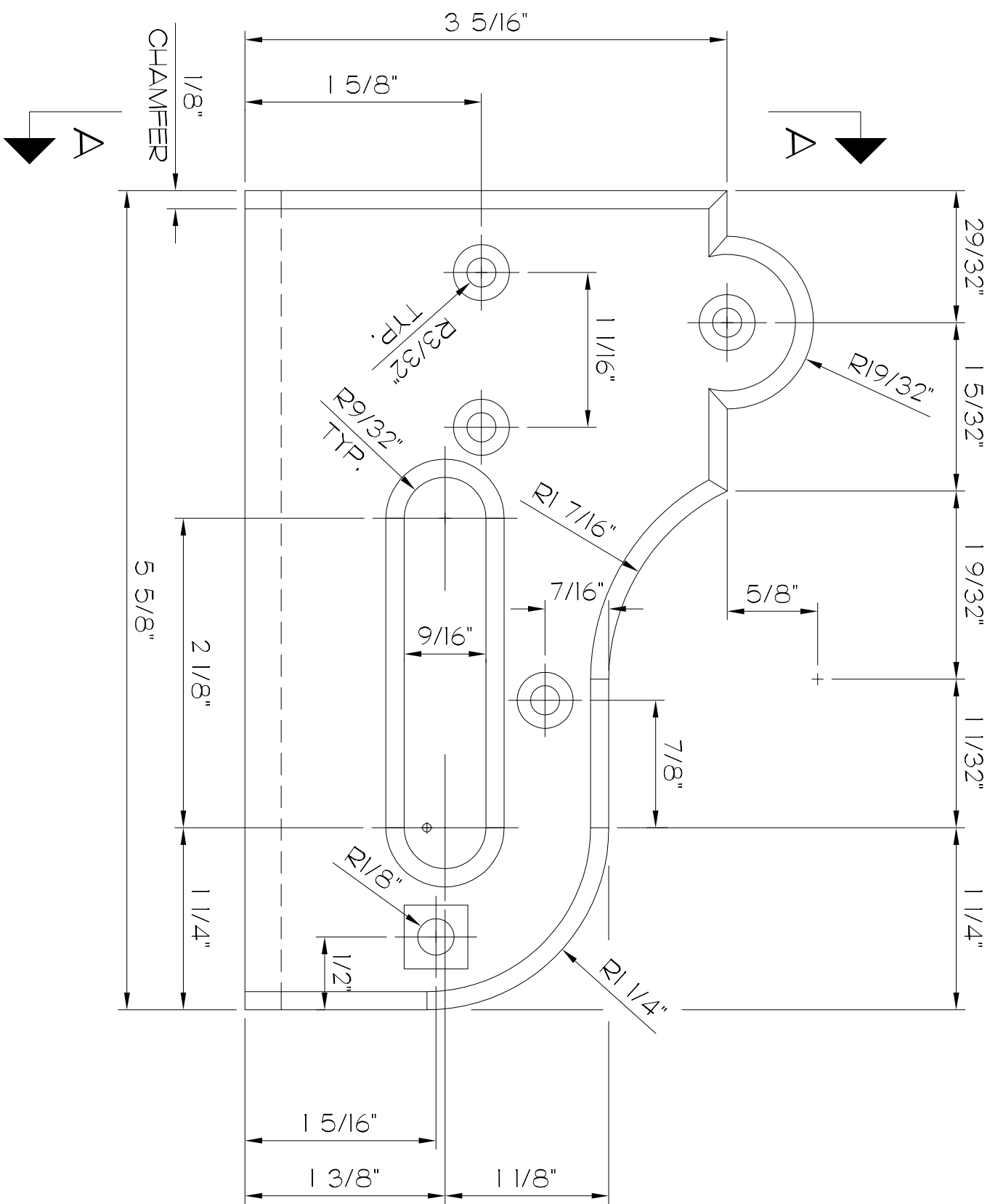
REV.		DATE		REVISION		BY		APP		CLIENT	
										WOODWORKERS AT LARGE	
DRAWN		LJB		CHECKED				PROJECT NUMBER		DRAWING NUMBER	
PUNCHINELLO ENTERPRISES								2006-100 SHIT, 4/7		REV.	
NOTE: THESE PLANS ARE PROVIDED FOR PERSONAL USE ONLY AND MAY NOT BE SOLD FOR PROFIT OR REDISTRIBUTED WITHOUT WRITTEN PERMISSION BY THE AUTHOR, LOUIS BOS.		SCALE: 1/2" = 1"								B	



VIEW A-A

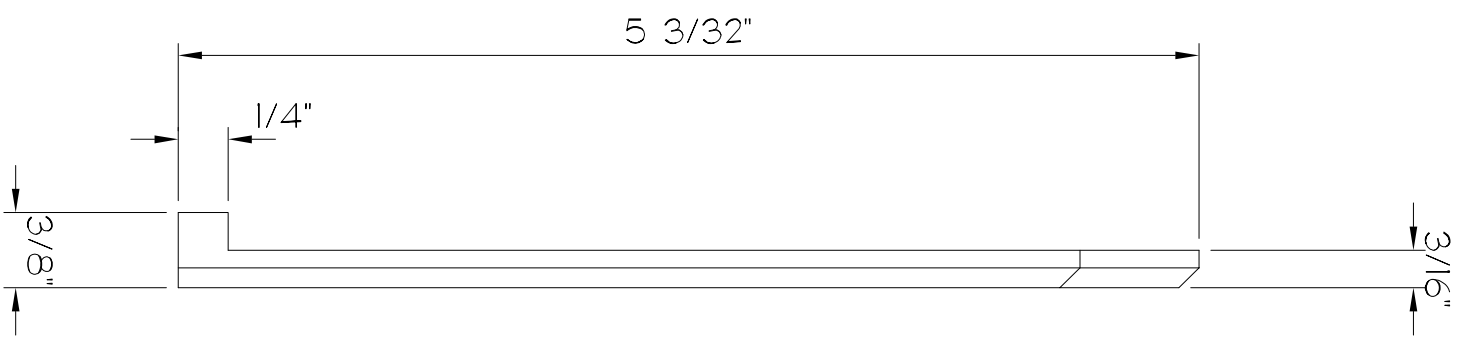


VIEW A-A

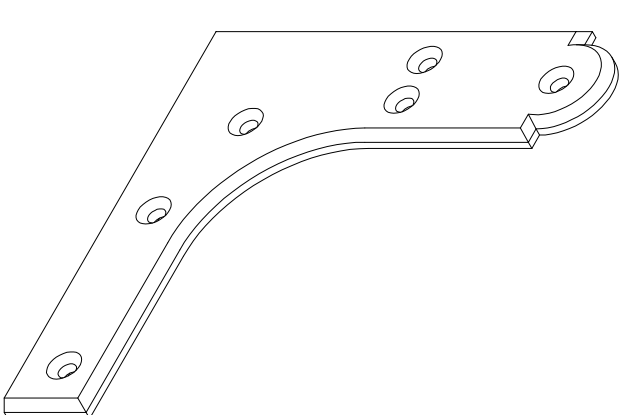
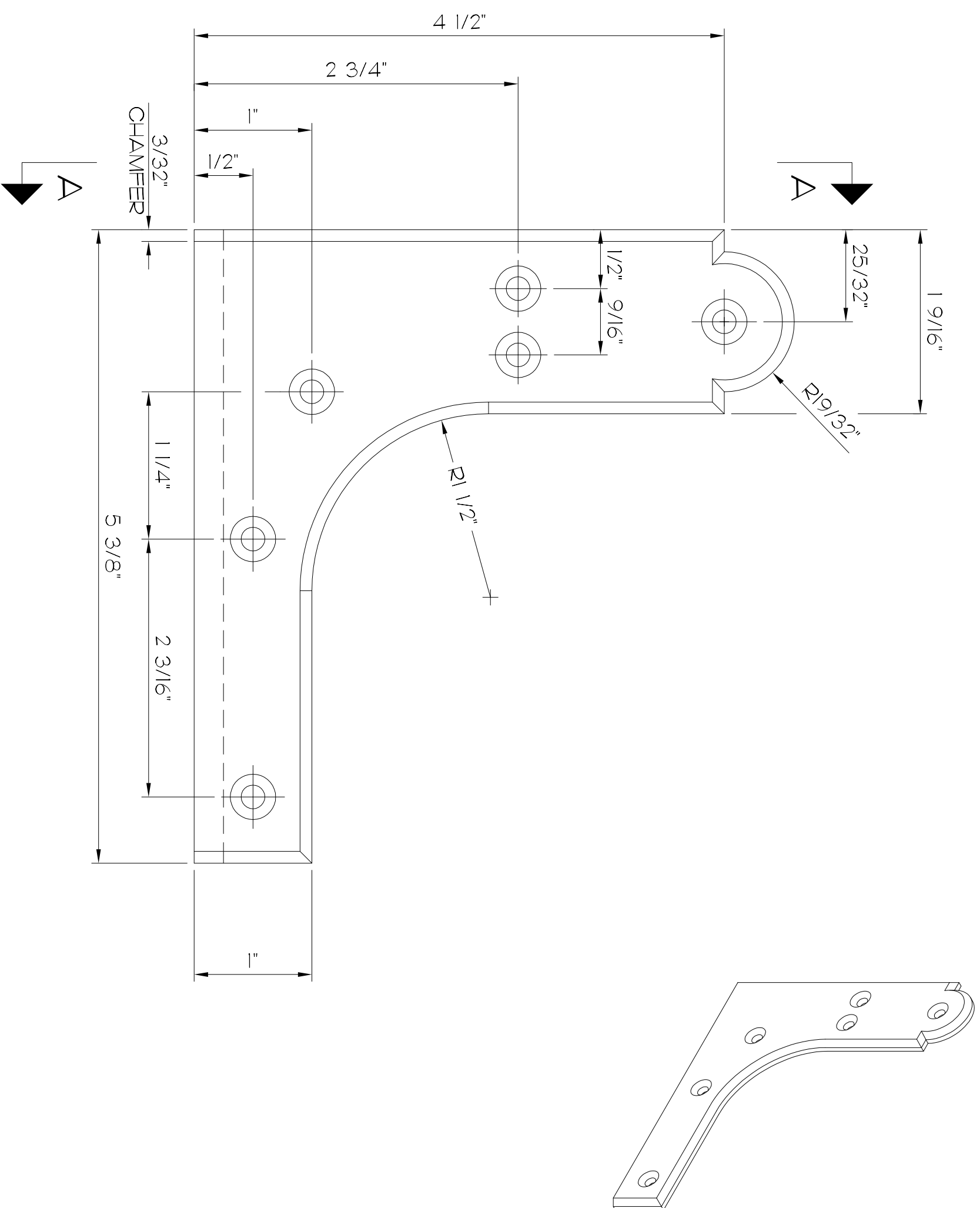


NOTE: 2 REQUIRED - ONE AS SHOWN
AND ONE OPPOSITE HAND
(MADE OF STEEL)

REV.	DATE	REVISION	BY	APP.	CLIENT
					WOODWORKERS AT LARGE
PUNCHINELLO ENTERPRISES <small>NOTE: THESE PLANS ARE PROVIDED FOR PERSONAL USE ONLY AND MAY NOT BE SOLD FOR PROFIT OR REDISTRIBUTED WITHOUT WRITTEN PERMISSION BY THE AUTHOR, LOUIS BOS.</small>			DRAWN: LJB CHK'D: APP'D: SCALE: FULLSIZE	TITLE: CARVER'S CHOPS PLANS FROM "FORGE ROYALE" MODEL PROJECT NUMBER: 2006-100 SHT. 5/7	REV. B

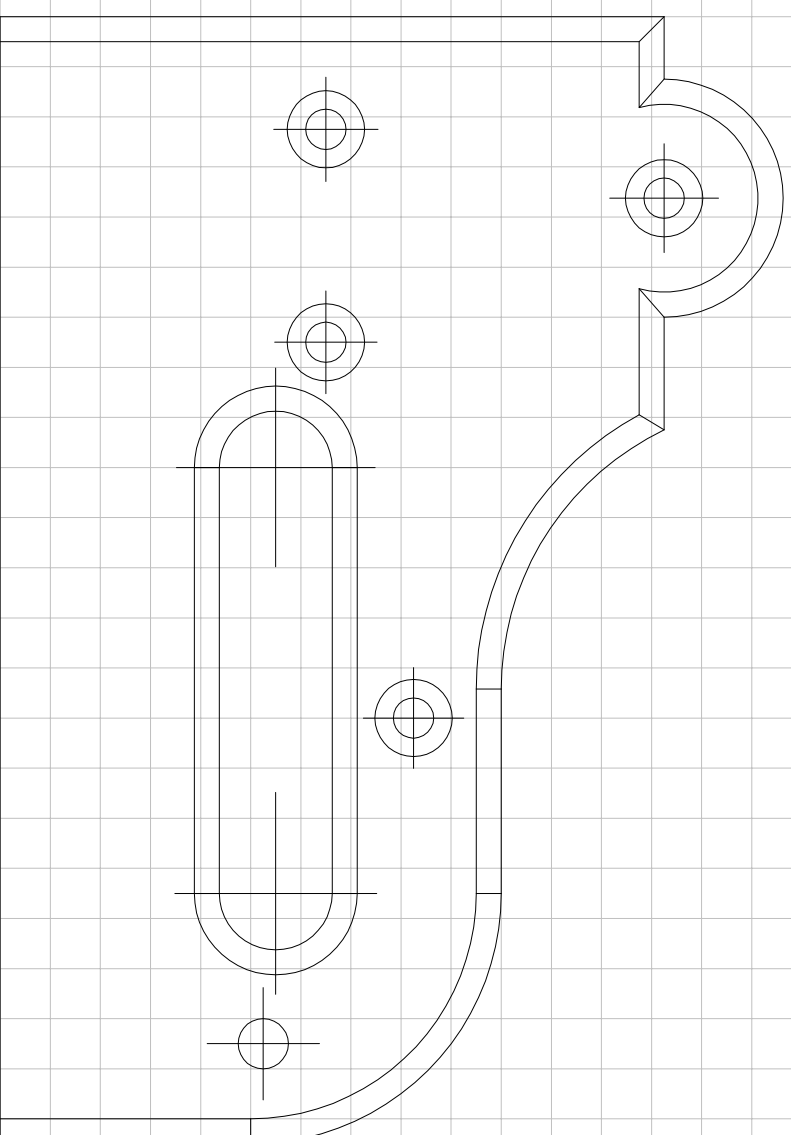
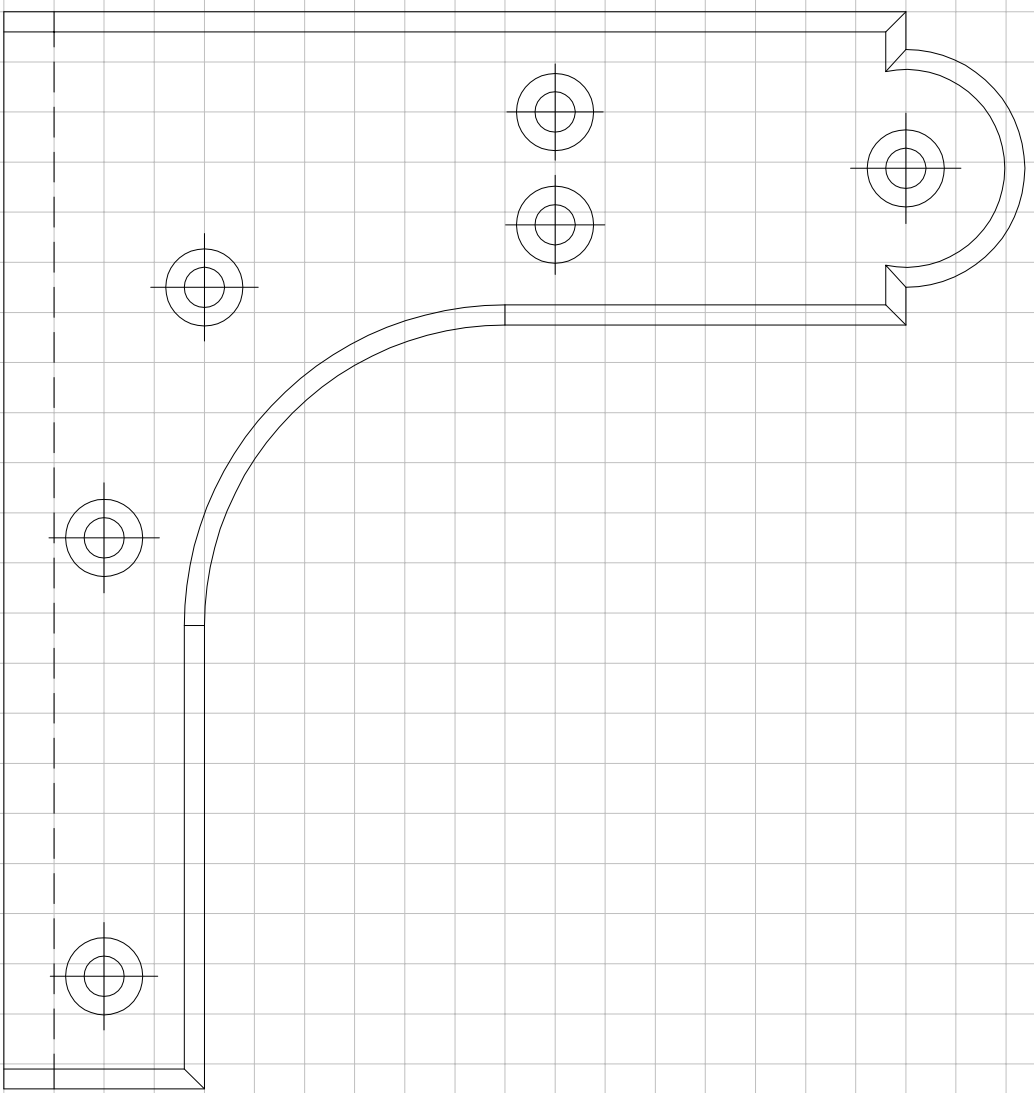


VIEW A-A



NOTE: 2 REQUIRED - ONE AS SHOWN
AND ONE OPPOSITE HAND
(MADE OF STEEL)

REV.		DATE		REVISION		BY		APP		CLIENT	
										WOODWORKERS AT LARGE	
DRAWN		LJB		CHK'D.						TITLE	
PUNCHINELLO		ENTERPRISES		SCALE: FULLSIZE		PROJECT NUMBER		DRAWING NUMBER		CARVER'S CHOPS PLANS	
NOTE: THESE PLANS ARE PROVIDED FOR PERSONAL USE ONLY AND MAY NOT BE SOLD FOR PROFIT OR REDISTRIBUTED WITHOUT WRITTEN PERMISSION BY THE AUTHOR, LOUIS BOS.										FROM "FORGE ROYALE" MODEL	
										2006-100 SHT. 6/7	
										REV.	
										B	



FULL SIZE PATTERNS ON 1/4" GRID

REV.		DATE		REVISION		BY		APP		CLIENT	
										WOODWORKERS AT LARGE	
DRAWN		LJB		CHK'D.				PROJECT NUMBER		DRAWING NUMBER	
PUNCHINELLO		ENTERPRISES		SCALE: FULLSIZE				CARVER'S CHOPS PLANS		FROM "FORGE ROYALE" MODEL	
NOTE: THESE PLANS ARE PROVIDED FOR PERSONAL USE ONLY AND MAY NOT BE SOLD FOR PROFIT OR REDISTRIBUTED WITHOUT WRITTEN PERMISSION BY THE AUTHOR, LOUIS BOS								2006-100 SHT. 7/7		REV.	
										A	















